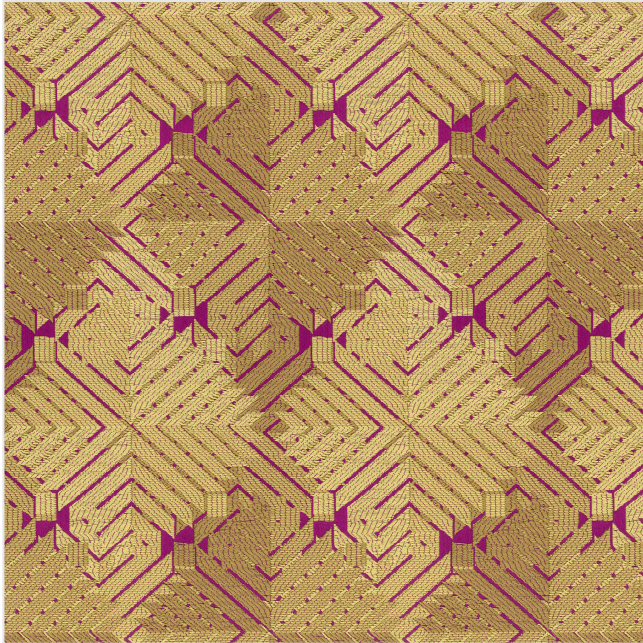




RUBELLI



Product scan (≈25x25 cm) or picture



Full width simulation (≈135 cm)

## PHULKARI - SAFFRON

### A30656-1

Inspired by the typical silk embroidery of the Punjab region, this lampas features a traditional geometric pattern creating rhombuses. The interplay of overlapping layers and light enhances the fabric's three-dimensionality. Suitable for upholstery.

*Lampasso ispirato ai ricami di seta tipici della regione del Punjab. Una geometria tradizionale crea delle losanghe. Il gioco di piani sovrapposti e di luce amplifica la tridimensionalità del tessuto. Adatto per imbottiti.*

Lampas inspiré des broderies en soie typiques de la région du Punjab. Une géométrie traditionnelle crée des losanges. Le jeu de plans superposés et de lumière amplifie la tridimensionnalité du tissu. Convient pour les sièges.

COMPOSITION:	56%PL 35%PA 9%PC
USE:	HEAVY USE
WIDTH:	135 cm
WEIGHT:	580 gr/m
VERTICAL REPEAT:	16 cm
HORIZONTAL REPEAT:	11,5 cm
MARTINDALE:	26000 rubs
QUALITY CERTIFICATION:	A30656
CERTIFICATIONS:	UK Cigarette BS5852 source 0, U.S.A. CAL.TB117:2013

