

F18AKS02XX Series HUG

Robe hook, painted or chromed stainless steel, with peg mounting system

Mounting hardware supplied for wood stud installation.

Product Data

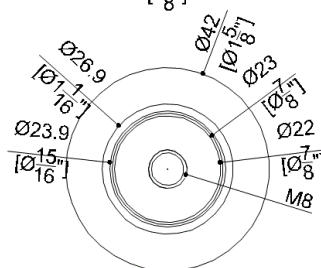
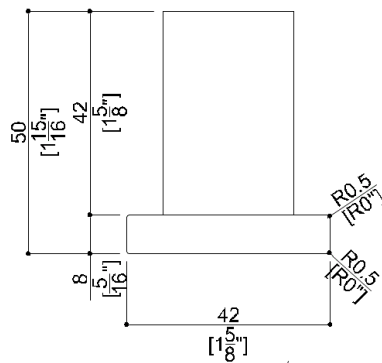
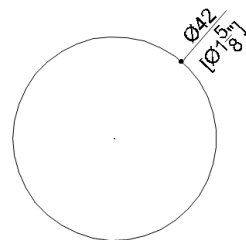
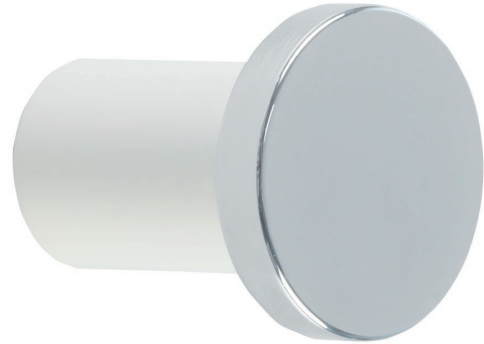
Overall Dimensions (Inch.)	1-5/8 x 2 x 1-5/8
Net Weight (lbs.)	0.33

Installation Hardware Details

Stainless steel screw and dowels

Packaging Details






Package	Cardboard package
Package dimensions (Inch.)	5-7/8 x 3 x 1-13/16
Weight with Packaging (lbs.)	0.44




F18AKS02XX Series HUG

Available Finishes (xx)

Body

 G9 Lime	 N2 Bright	 P5 Aubergine
 R2 Copper	 WE Signal White	

End cap

 C1 Chrome
--

Materials and finishes

Stainless Steel Polished

Aluminium Polished

Load Capacity

Vertical 44 lbs.

Warning

Before installation and use, read the installation and use instructions in their entirety. If questions arise please contact Ponte Giulio company.

Cleaning

Product can be cleaned with a cloth and warm soapy water. Non abrasive, solvent free cleaners can also be used.

Warranty

Please visit www.pontegiulio.com for complete warranty details.